



# You're Registered!

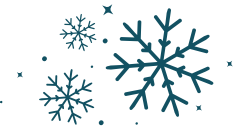


Welcome to the 2025 PSIA-AASI Women's Summit! We are so happy that you'll be joining us in February for skiing/riding, learning, networking, and building community among so many amazing female snowsports professionals. You're registered... So, what's next?!

Here's some information to help you organize your plans for Solitude 2025! We'll send out a detailed Women's Summit Event Guide in January. Until then... giddy-up and start filling in your itinerary!

In Skiing & Riding Sisterhood, The PSIA-AASI Women's Council for Equity & Inclusion

## Where's Solitude?



Solitude Mountain Resort is nestled in Big Cottonwood Canyon, near Salt Lake City, Utah.  
Base: 7,994' / Summit: 10,488'  
Depending on traffic/weather/road conditions, it's 45-60 minutes (36 miles) from downtown Salt Lake City and/or the Salt Lake International (SLC) airport.

[Link: First-time visitor information](#)

## Arrive Early/Stay Late

The Salt Lake City area is home to several amazing resorts ~ all accessible within approx. 60 minutes from downtown Salt Lake City. Consider adding a few days before or after the Summit!

## Lodging

There are several great lodging options for the event!  
At Solitude Mountain Resort

- Inn at Solitude
- Solitude Resort Lodging
- Powderhorn Lodge
- Solitude Monte Vista

[Link: Solitude lodging options](#)

**NOTE:** if you are booking at the resort, use the "PSIA-AASI Women's Summit" reference for the rooming block and discount. RESERVATIONS: 385-282-7155

In Big Cottonwood Canyon & Cottonwood Heights area

- AirBNB & VRBO
- Hotels: Courtyard, Hyatt, Residence Inn, Hampton Inn

## From Airport to Solitude

For those traveling by air, you'll find Solitude Mountain Resort quite accessible. Options for transportation from the airport to your accommodations include:

- Car rental (on-site/airport or off-site via shuttle)
- Airport Shuttle Services from **Utah Mountain Shuttle** run to/from Solitude 3x/daily. Reference "PSIA-AASI Women's Summit" when booking. 801-298-2191

[Link: Utah Mountain Shuttle](#)

- UBER/LYFT from the airport to the 6200 Wasatch Blvd. Park & Ride & then take the Ski Bus #972 (\$5) up to Solitude's Moonbeam Lodge area. Solitude mini-shuttle runs to/from the Village. IKON Passholders = Free UTA Skibus!

## From Lodging to the Slopes



Our morning rendezvous spot for the Women's Summit will be the **APEX EXPRESS LIFT / LAST CHANCE LODGE** area. You may store your boot bag upstairs at Last Chance Lodge.

**WOMEN'S SUMMIT SKI DAYS: February 24, 25, 26**

### Staying at Solitude

The lifts are a short walk from the resort lodging. Guests at Solitude Mountain Lodging receive complimentary parking.

### Staying in SLC/Cottonwood Hts./Big Cottonwood Canyon

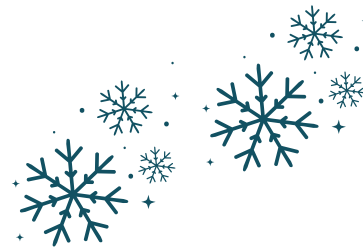
- Drive to resort & park in pay lots.
- Take FREE hotel shuttle (where available) & UTA Ski Bus/Cottonwood Connect for \$10 roundtrip. IKON Passholders = Free UTA Skibus!

Parking lots open at 7am. There is a Solitude mini-shuttle that runs to/from Moonbeam Lodge parking area and the Village.

[Link: Solitude parking info.](#)  
[Link: How to Use the UTA Skibus](#)



# Agenda



## Sunday, February 23rd

### Welcome Reception - Last Chance Lodge; Village at Solitude

5 - 6 p.m. MT - Women's Summit Registration/Check-in and Cocktails

6 - 6:30 p.m. MT - Welcome & Introductions!

6:30 - 7:30 p.m. MT - Keynote speaker - Dee Byrne - Connecting with Power and Grace

- Dee Byrne, recently retired President and COO of Palisades Tahoe, and past National Team Member, will share how she made connections throughout her career. Dee has reached the highest level of achievement as an Instructor, manager, and leader. She will share some of what she has learned about how her gender has shaped those experiences.

7:30-8 p.m. MT - Meet the coaches/group assignments

8 p.m. MT - DINNER ON OWN

## Monday, February 24th

9 - 12 p.m. MT - On hill or trails with group (meet outside Last Chance Lodge - base of Apex lift)

12 - 1 p.m. MT - Lunch on own

1 - 4 p.m. MT - Choose Your Adventure Options

- Demos available
- On snow options TBD
- Indoor options TBD

4:30 - 6:30 p.m. MT - Après Ski at Last Chance Lodge - Cocktails, conversations, and light refreshments

6:30 p.m. MT - DINNER ON OWN

## Tuesday, February 25th

9 - 12 p.m. MT - On hill or trails with group (meet outside Last Chance Lodge - base of Apex lift)

12 - 1 p.m. MT - Lunch on own

1 - 4 p.m. MT - Choose Your Adventure Options

- Demos available
- On snow options TBD
- Indoor options TBD

5 - 7 p.m. MT - Après Ski at Last Chance Lodge - Cocktails and light refreshments

- The Effect of Gear on Career Growth and Development
  - Panel discussion featuring Industry Equipment Specialists
- Give-Away Drawing following panel discussion

7 p.m. MT - DINNER ON OWN

## Wednesday, February 26th

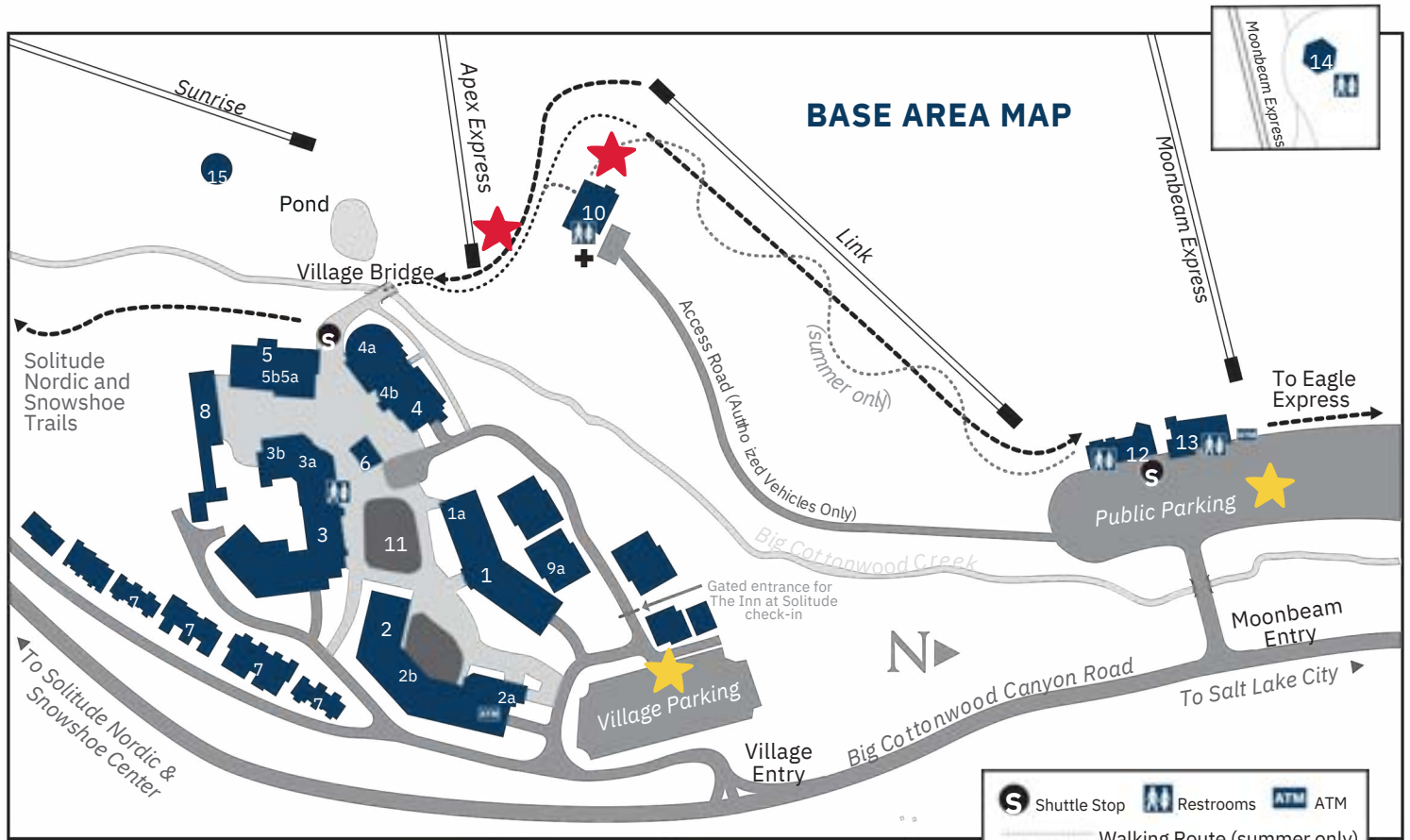
7:30 a.m. MT - Early Ups for Coaches and Participants Hosted by Solitude

- Meet at base of Apex lift at 7:15 a.m. MT

9 a.m. - 1 p.m. MT - On hill or trails with group (enjoy lunch together)

2 p.m. MT - Finale - Groups gather together on-snow for a fun wrap-up and send-off

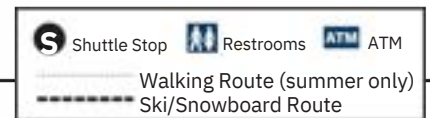




## MAP DIRECTORY

- 1.** Eagle Springs West (condominiums)
  - 1a. Village Store
- 2.** Eagle Springs East (condominiums)
  - 2a. Reception/Lodging Check-In for Condominiums
  - 2b. Club Solitude
- 3.** Powderhorn Lodge (condominiums)
  - 3a. Powderhorn Adventure Center
    - Ticket Office
    - Ski/Snowboard Rental and Repair Shop
    - Mountain Bike and Disc Golf Rental Shop
    - Public Lockers
  - 3b. Thirsty Squirrel
- 4.** Creekside (condominiums)
  - 4a. Honeycomb Grill
  - 4b. Canyon Fever Retail Shop
- 5.** The Inn at Solitude (hotel)
  - 5a. St. Bernard's
  - 5b. Solitude Mountain Spa (lower level)
- 6.** Stone Haus Pizzeria & Creamery
- 7.** Crossings Townhomes
- 8.** Administrative Offices
- 9.** Luxury Home Rentals
  - 9a. Silver Aspen Townhome
- 10. Last Chance Lodge**
  - Last Chance Southwest Grill
  - Mein Street Noodle Bar (Fri - Sun)
  - Medical Clinic
- 11.** Village Green

- 12.** Solitude Ski & Ride School (open in winter)
  - Ski & Ride School Registration
  - Guest Services
  - Public Lockers
  - Little Dollie's
- 13.** Moonbeam Lodge (open in winter)
  - Ticket Office • Dining • Argenta Pub
  - Ski/Snowboard Rental and Repair Shop
  - Canyon Fever Retail Shop
  - Public Lockers
- 14.** Roundhouse F
- 15.** The Yurt (open in winter)



## Getting Around in Winter

### Between Moonbeam Base Area and Solitude Village:

Skiers can access Solitude Village from the top of any chairlift, but the quickest route is to ride the Link chairlift from the Moonbeam Lodge base area, then ski directly to Solitude Village. For ski access from Solitude Village to the Moonbeam base area, walk across the Village Bridge toward Last Chance Lodge and up the short hill onto Easy Street, a beginner trail.

**Legs tired? Catch the Solitude Shuttle in front of Ski & Ride School and take a ride to Solitude Village. The Solitude Shuttle runs frequently each day between these two locations during the winter.**

### Between Moonbeam Base Area and Solitude Nordic & Snowshoe Center:

Solitude Nordic & Snowshoe Center is located 2.2 miles up Big Cottonwood Canyon from the Moonbeam Base Area. It can be accessed via the UTA Ski Bus that operates frequently each day between Solitude and Brighton. A UTA stop is located in the Moonbeam parking lot, and the buses travelling up canyon stop at the Nordic & Snowshoe Center. Those with Nordic skis or snowshoes can access the trail system from Solitude Village on the trail that begins behind The Inn at Solitude.

**Village Parking Lot:** parking area for Women's Summit guests who are lodging at Solitude. Parking pass will be issued upon your check-in from the front desk staff.

**Public Parking Lot:** Solitude pay parking area for Women's Summit guests that are commuting to the mountain.

Feb. 23: No charge parking after 1pm. Feb. 24, 25, 26: daily cost tbd

